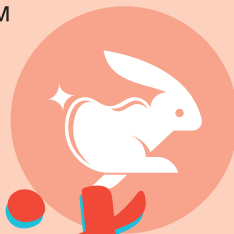


SNAPWHITE™

TEETH WHITENING

snapwhite.com #ohsnapwhite



made in u.s.a.



cruelty-free



vegan

the kit



NET 0.44 FL. OZ. (10 ML WHITENING GEL, 3 ML REMINERALIZING GEL)

LED ACCELERATOR / TEETH SHADE GUIDE / THERMOFORMING MOUTH TRAYS WITH CASE



READ ALL INSTRUCTIONS BEFORE BEGINNING. TIPS: Avoid staining foods/beverages during the entire length of your whitening treatment. If you must consume these, it is recommended to do so through a straw. When molding your trays, submerging them in hot water for too long may render them unusable. If the back ends of your tray fold over, don't worry—you can still use it, because only the eight front teeth of your smile are visible. Use the remineralizing (blue) gel after your treatment is complete; however, you can use the remineralizing gel during treatment if you experience tooth sensitivity by applying a small dab directly to the sensitive tooth.

1 MOUTH TRAYS. Mold one tray at a time.

Molding Bring a pot of water to a boil. Remove from heat and wait 30–60 seconds. Hold the tab of one tray, submerging it in the water for about 5 seconds or UNTIL IT JUST STARTS TO WILT SLIGHTLY. Pull it out of the hot water and IMMEDIATELY insert the tray under your upper teeth.

Impressing Bite down on the tray while pressing the tray against the front of your teeth with your fingers and use your tongue to press against the back. Let it set. If it hasn't molded enough, repeat the heating process, making sure to bite down in the same place.

After you've molded the top tray, repeat the molding and impressing process with your bottom tray.

Finishing Touches When both of your trays are molded, cut off the tabs. If needed, for a better fit, cut the tray edge above the teeth indentations. Consider marking one of the trays to remember which tray is which. You will only ever need to mold the trays the first time they are used.

KEEP GEL REFRIGERATED AND BRING TO ROOM TEMPERATURE BEFORE USE.

WARNING: NOT RECOMMENDED FOR CHILDREN UNDER 12 YEARS OLD. AVOID CONTACT WITH EYES AND SKIN. IF CONTACT OCCURS, WIPE GEL OFF AND RINSE WITH WATER. CONSULT YOUR ORAL HEALTH PROFESSIONAL BEFORE PROLONGED USE. DO NOT USE IF PREGNANT OR LACTATING OR HAVE GUM DISEASE OR OTHER DENTAL CONDITIONS. DO NOT SWALLOW. IF IRRITATION (SUCH AS REDNESS, SWELLING, SORENESS) OF GUMS OR MOUTH OCCURS, DISCONTINUE USE AND CONSULT AN ORAL HEALTH PROFESSIONAL. DISCONTINUE USE IF YOU FEEL A SHARP PAIN IN A TOOTH THAT LASTS MORE THAN A FEW SECONDS, AND CONSULT WITH YOUR DENTIST IMMEDIATELY. DO NOT SUBMERGE LED TRAY IN WATER WHILE PLUGGED INTO A POWER SOURCE. CLEAN LED TRAY BY RINSING WITH WATER. DO NOT USE LED TRAY FOR LONGER THAN 60 MINUTES AT A TIME. UNPLUG LED TRAY FROM POWER SOURCE WHEN NOT IN USE. STORE LED TRAY IN A CLEAN, DRY PLACE. USE ONLY UNDER THE SUPERVISION OF A DENTIST.

INGREDIENTS: WHITENING GEL: PROPYLENE GLYCOL, GLYCERIN, HYDROGEN PEROXIDE, UREA PEROXIDE, CARBOMER, TRIETHANOLAMINE, FLAVOR, MENTHOL, DISODIUM EDTA. REMINERALIZING GEL: GLYCERIN, AQUA, POTASSIUM NITRATE, CARBOMER, SODIUM HYDROXIDE, TRICALCIUM PHOSPHATE, SODIUM SACCHARIN, SODIUM BENZOATE, FLAVOR, CI 42090.

2 WHITENING (CLEAR) GEL. Follow the whitening steps below, once a day for 7–14 days, depending on your desired results. Do not exceed 14 consecutive days.

Prep BRUSH & FLOSS TEETH JUST PRIOR TO YOUR WHITENING TREATMENT. Make sure your trays are clean and dry.

Each tray requires less than 0.5mL of whitening gel. Place a small bead of gel in each indentation inside each tray—evenly spread the gel in a thin layer. Wipe off any excess gel.

Whiten Set the bottom tray firmly to your bottom teeth and the top tray firmly to your top teeth. Use a tissue to wipe off any excess gel that might have seeped over the brim of the trays—avoid getting gel on your gums or soft tissues of the mouth. Wear the trays for 30–60 minutes (depending on your sensitivity level). Do not exceed 1 hour.

Rinse Remove the trays and rinse off the remaining gel from your teeth. Wash your trays thoroughly with cold water. Store gel in refrigerator when not in use.

3 REMINERALIZING (BLUE) GEL

Remineralize USE AFTER YOU'VE COMPLETED YOUR 7–14 DAY WHITENING TREATMENT OR IF YOU DEVELOP TOOTH SENSITIVITY DURING TREATMENT.

Use clean, dry trays and apply the blue gel to the upper and lower trays in the same manner you did with the whitening gel. Wear the trays for 10 minutes. Remove your trays, but **do not rinse your mouth.** Wash your trays thoroughly with cold water.

LED LIGHT (OPTIONAL)

Prep Remove the batteries and the plastic tab from the battery compartment. Reinsert the batteries correctly and close the compartment.

Power After applying the whitening gel, turn the light on by pressing the power button. Place the clear shield between the trays and the inside of your lips. Keep the light on during the 30–60 minute whitening.

MANUFACTURED BY:
Beaming White, LLC.
1205 NE 95th St
Vancouver, WA 98665 USA



14363